



Sustainability Report for Manufacture Wolf SA

Report Year: 2025

1 Introduction

Manufacture Wolf SA is committed to integrating sustainable practices into our operations and business culture. This report outlines our initiatives, progress, and future goals in our journey towards sustainability.

2 Company Overview

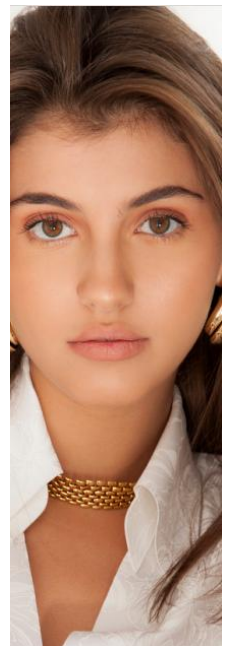
Manufacture Wolf SA specializes in high-quality external parts for the watch industry : cases, bracelets and buckles. Our mission is to deliver superior products while minimizing our environmental footprint and enhancing social responsibility.

3 Sustainability Strategy

Our sustainability strategy revolves around three main pillars:

- Environmental Stewardship
- Social Responsibility
- Economic Viability

Manufacture Wolf SA is a certified member of the Responsible Jewellery Council, which impacts our way to conduct our business in a more sustainable way. RJC is the global membership and standards body for responsible jewellery throughout the entire supply chain – from mine to retail. The 'Code of Practice' references key development frameworks, including the Universal Declaration of Human Rights, ILO Principles and UN Global Compact and Sustainable Development Goals (SDGs).



In developing our sustainability strategy, and sustainability reporting, we continually reference the UN SDGs to align our actions with those of the 2030 Agenda for Sustainable Development.



4 Environmental Stewardship

4.1 Energy Efficiency

In the recent past, Manufacture Wolf SA along with Posaterra (premise owner) implemented together various projects to increase our energy efficiency:

- solar panels on the roof
- all non-solar energy comes from renewable hydraulic sources
- re-use of machinery heat to heat the premises in winter
- installation of LED lighting

4.2 Waste Management

We are currently recycling following materials in our operations:

- all metals in production (stainless steel, titanium, aluminium)
- cardboard
- aluminium from beverage cans
- PET bottles

4.3 Sustainable Sourcing

Our supply chain is a critical component of our sustainability efforts. We prioritize sourcing materials from suppliers who adhere to ethical and sustainable practices.

Recyclable and recycled materials:

- all metals used in production are recycled
- all industrial oils are recycled
- all cardboard packaging is recycled
- cleaning water is recycled

Recyclable and not recycled materials:

- plastic films to protect parts from scratches (PVC, PE...)
- polystyrene packaging

4.4 CO₂ emissions

Our CO₂ emissions have been calculated at 1.03t CO₂e/year

Source : <https://asdeva.ch/outils/calculateur-co2-entreprise-suisse-en-ligne-gratuit/>

5 Social Responsibility

5.1 Employee Engagement

We believe that our employees are key stakeholders in our sustainability journey. All our actions are mainly accomplished by our employees.

5.2 Community Involvement

Manufacture Wolf SA is dedicated to supporting local communities. Our initiatives include training employees to be able to coach young professionals (apprenticeship).

5.3 Diversity and Inclusion

Promoting a diverse and inclusive workplace is fundamental to our values. Today, women represent 29% of our staff.

6 Economic Viability

6.1 Swissness

We have consistently increase our Swissness level from 2017. We are now able to offer 100% Swiss Made products to customers who wish it.

6.2 Financial Performance

Despite the global challenges, our sustainability initiatives are compatible with a positive financial performance and we do not see any pressure from the market to reverse the tendency.

7 Conclusion

Manufacture Wolf SA is committed to embedding sustainability into the fabric of our operations. We recognize the importance of our role in addressing environmental and social challenges and are dedicated to continuous improvement in these areas. We will continue to engage our stakeholders and report on our progress to ensure transparency and accountability.

8 Contact Information

For more information regarding this sustainability report, please contact:

Manufacture Wolf SA
Fritz-Oppliger-Strasse 18
2504 Biel
Switzerland
<https://wolf-suisse.com>